

EVENING WITH THE ELDERS

NOVEMBER 2017

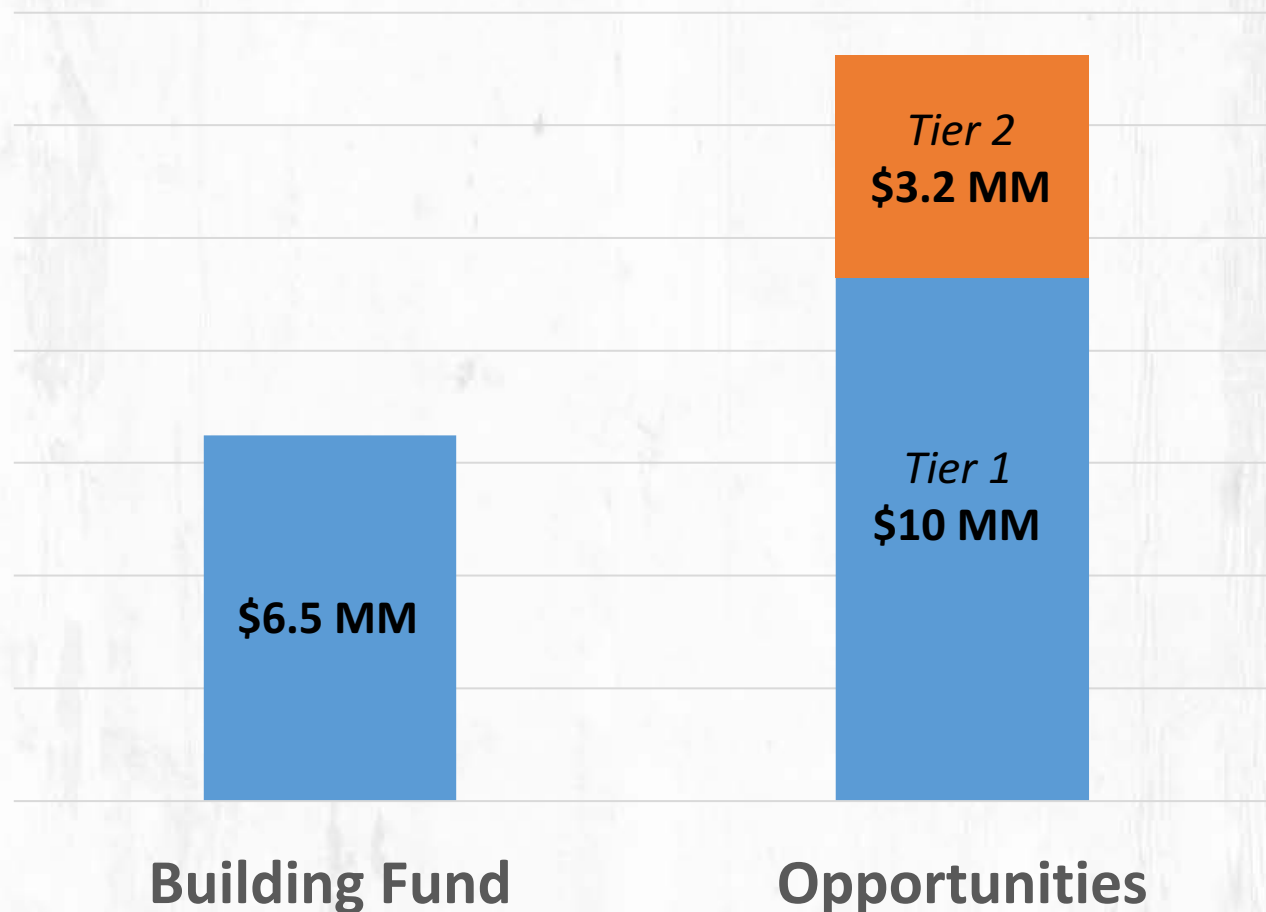
Agenda for the Evening

- Elder Introductions
- Vision for Community Groups
- Leadership Update
- Facilities Update
- Frequently Asked Questions
- Time of Prayer

EVENING WITH THE ELDERS

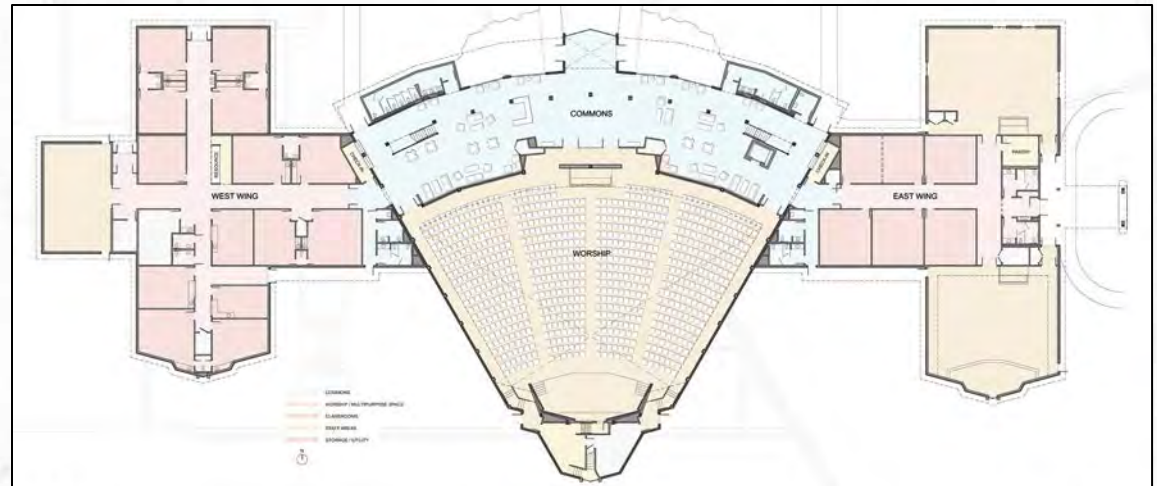
Facilities Update

- We currently have **\$6.5 MM** in our Building Fund.
- We have total opportunities of **\$13.2 MM** including:
 - Fort Worth Campus Development
 - Outdoor Community Spaces
 - Additional Gathering Rooms
- **\$6.7 MM** in opportunities are on hold pending resources.



New Fort Worth Campus Development

- **\$8.5 MM in opportunities.**
- Demolition began in October and is currently underway.
- Plans & budget are being finalized, and construction will start soon.
- Target completion date is mid-2018.



EVENING WITH THE ELDERS

Dallas: East Tower

- **\$1.8 MM in opportunities.**
- Floors 1 & 2 are complete and in full use; the next step is to remodel and build out the 3rd floor.
- The elevators are in need of an immediate upgrade and refurbishing.

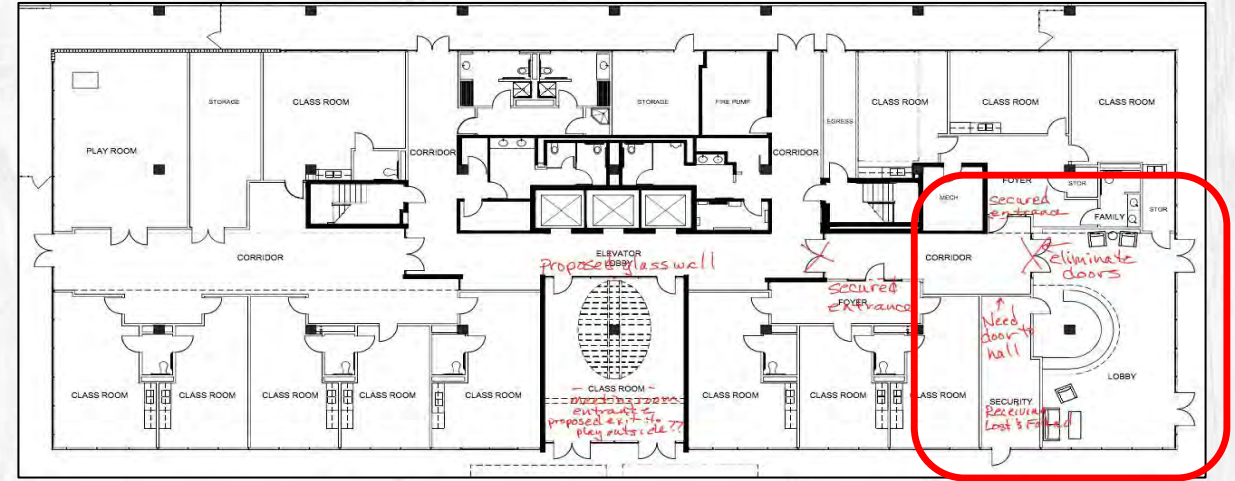


EVENING WITH THE ELDERS

Dallas: West Tower

- **\$1.3 MM in opportunities**
- A burst water pipe over the summer damaged the first floor, but also provided a great opportunity to improve.
- We are creating a new main entrance to be a more inviting “front door” to our campus on the south end.
- The 7th floor needs an office and layout redesign to maximize the team’s effectiveness.

Proposed new entrance & lobby



Pipe repair project



EVENING WITH THE ELDERS

Dallas: Campus Spaces

- **\$1.5 MM in opportunities.**
- We are designing new outdoor gathering spaces in front of the West Tower to better tie the full campus together and provide more places to connect.
- The space underneath the chapel can be built out into a gathering room with capacity for 350.
- The South Parking lot needs a new surface and lighting.



EVENING WITH THE ELDERS

Plano Campus

- **\$150K in opportunities.**
- Currently negotiating a long-term parking lease to secure more spaces.
- Additional classrooms coming online to add capacity for ministries.
- As membership grows, we've engaged an architect to begin campus master plan.



EVENING WITH THE ELDERS

Building Fund & Project Details

- **Current Funds: \$6.5 MM**
- **Total Projects: \$13.2 MM**
- **Total Shortfall: \$6.7 MM**

Tier 1: Immediate Projects

Project	Cost
Fort Worth Campus Development	\$8,500,00
West Tower Outdoor Gathering Areas	\$750,000
East Tower Elevators	\$485,000
West Tower Entrance	\$300,000
TOTAL	\$10,035,000

Tier 2: Pending Projects

Project	Cost
East Tower 3 rd Floor	\$1,300,000
West Tower 7 th Floor	\$1,000,000
Dallas Chapel Gathering Space	\$500,000
Dallas South Lot	\$175,000
Plano Misc.	\$150,000
Dallas Landscaping	\$60,000
TOTAL	\$3,185,000

Visit watermark.org/makingroom for additional resources

EVENING WITH THE ELDERS

Frequently Asked Questions

- How do the Elders work together? What are they focused on? How are decisions made?
- Will our campuses eventually become independent churches?
- Are there any new campuses in the works? What's next?
- What is our annual budget? Where does the money go? [slide]
- What is being done to address crowding on Sunday mornings?
- How can we ensure that our campuses are safe and secure?
- How are we cultivating diversity at Watermark?
- What are the Elders especially excited about right now? [slide]

Visit watermark.org/elders for additional resources

Great Things Are Happening

- Stories of life change
- Seeing our body transformed and ministering to others
- Midweek ministries
- Church Leaders Conference and Watermark's increasing ministry to other churches
- Watermark Institute...Residency and Fellowship
- QuestCare Clinic...Plano expansion
- All things LIFE...foster care and adoption opportunities. Bruce Kendrick joining staff as Director of Life Initiatives
- Our staff team and the next five years of ministry opportunity before us

EVENING WITH THE ELDERS

Watermark's Financial Overview

2016-2017 OPERATING BUDGET

Staff <i>(202 full-time)</i>	\$17,076,359	62.5%
Facilities / Operations	\$7,033,507	25.7%
Ministry Partners*	\$1,058,030	3.9%
Other ministry costs**	\$2,172,696	7.9%
	\$27,340,592	100%

Notes:

**Of the total Ministry Partner spending, \$1mm is budgeted out of the General Fund, while \$700k this year has been designated giving by individuals wanting these funds to go directly to our ministry partners.*

***Other ministry costs includes midweek ministry costs as well as costs associated with weekend services.*

EVENING WITH THE ELDERS

EVENING WITH THE ELDERS

NOVEMBER 2017